



# MECHANICAL DEVICES



## Couplings, Torque Limiters and Line Shafts: Application Connection

iMotion partners with R+W Coupling Technology to provide high quality shaft couplings according to your specific business requirements. The R+W products join seamlessly with the products of iMotion's other industry leading suppliers. iMotion utilizes these product lines to provide engineered solutions that ensure your applications are high quality and cost effective.



A POPPE + POTTHOFF COMPANY

R+W stands for expertise in the development of solutions for precise torque transmission. Their guiding principle, DRIVE, is to manufacture top-notch, high-performance metal bellows couplings, elastomer couplings, disc pack couplings, and torque limiters for the global market; precise to the micrometer. With DRIVE, R+W strives to be a Dynamic, Reliable, Innovative and Versatile market and technology leader that creates Expansion by making further development and improvement part of our everyday business.

### Elastomer Couplings: Torsion Proof and Backlash Free

R+W offers state-of-the-art flexible shaft couplings and motor couplings, for any precision application: backlash-free torque limiters, torsionally rigid metal bellows couplings, vibration dampening elastomer jaw-type couplings, compact miniature couplings, flexible servo couplings, and axial zero backlash linear couplings.

#### ServoMax Elastomer Coupling Features:

- Vibration Dampening
- Electrically Isolating (standard version)
- Press Fit Design
- Compensate for lateral, angular and axial misalignment
- Bearings can be provided individually or with a pre-welded flange plate



### Torque Limiters: Reliable Torque Overload Protection

The use of a reliable R+W Torque Limiter will isolate the driving from the driven elements within a matter of milliseconds, once the torque reaches a preset overload value. Incorporating R+W torque limiting couplings into modern machine design will help insure high productivity and higher profits.



#### Torque Limiter SK + ST Features:

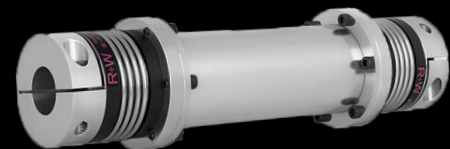
- Compact, simple design
- From 0.1 - 250,000 Nm
- Bore diameters 3-340 mm
- Available as a single position, multi-position, load holding or full disengagement versions
- Precise overload protection
- Single piece or press fit design

### Line Shafts: Stand Alone Performance

R + W offers state-of-the-art, high precision line shafts that run smoothly and can be operated with a length of up to 6 meters without intermediate support. Using the R+W line shafts can save costs by reducing the mounting time and eliminating excess hardware.

#### Line Shaft Features:

- From 5-25,000 Nm
- Bore diameters 3-280 mm
- Lengths up to 6 meters
- No intermediate support bearing necessary
- Lateral or radial mounting with split clamping hubs
- Compensate for lateral, angular and axial misalignment



www.imotioninc.com  
720.346.7307

121 S. Wilcox Street  
Castle Rock, CO 80104